

Innovation + Experience + Heart

MAKING PLACE FOR REAL HEALING

in Healthcare



TSA ARCHITECTS Healthcare Portfolio

REPRESENTATIVE WORK
May 2026



WHAT DRIVES US

Making Place for the Human Spirit!

TSA Architects is a full-service architecture firm celebrating 30+ years in practice. We believe in the power of design to create built environments that inspire the human spirit to flourish and thrive. We are seekers in understanding your future needs and helping you create inspired spaces to support your mission and vision.

“ I always love your vision. That’s why I always choose to work with you when possible on projects like this.

*Jon Butterfield, CEO
Jordan Valley Medical Center*

Values that shape our work:

INNOVATION: Your unique mission and brand is the genesis for our design efforts. To empower and enhance that mission and brand through your built environment is our greatest endeavor.

Your challenges become our challenges—an innate passion for creation and breakthrough fuels our work and will benefit your organization. We embrace both implementing best practice and challenging convention to arrive at the right solutions.

EXPERIENCE: Seasoned by working extensively with the best healthcare institutions across the region on important, mission-driven projects, we bring this experience to bear on your projects.

We promote the well-founded truth that sensitive, smartly designed buildings can contribute greatly to inspire and enable care providers, enhance the healing of patients and help you achieve your mission.

HEART: We care about your success, and are driven by our desire to make a difference for people in environments that really matter. To that end, our leadership and firm as a whole is committed to continual and lasting engagement with our clients. Our passion, commitment, and energy are always on the table.



LEADERSHIP TEAM



Design Principal, President

With an intense drive to understand the core motivation and mission behind each client, Nathan draws out the aspirational goals at the heart of each design endeavor—creating a deeply meaningful and tangible realization. For over 25 years, he has led the design of inspiring, groundbreaking healthcare environments large and small throughout the West, and relishes working with the talented and dedicated people who have chosen healthcare as their life's work.



Managing Principal, Vice President

Well-respected for his ability to expertly coordinate the myriad details and systems involved in diagnostic imaging, interventional medicine suites and other high-tech medical spaces, Doug's deep knowledge of imaging and procedural technology is key to blending innovative design with exceptional functionality. He has been a trusted healthcare architect for 30 years in helping dozens of medical campuses provide the best and most advanced care.



Associate, Project Architect

Specializing in design for health was a natural path as it allows her to combine her passion for architecture with talented medical teams, influencing patient lives in many facets. Marnie is a respected and dedicated client advocate and mentor of people who is known for implementing best practice and championing the best ideas in her work. Her collaborative and warm demeanor are frequently sought after to guide client projects and she is an exemplar of our firm culture.



Associate, Project Manager

Possessing a great ability to engage and bring people together toward common goals, Mark manages and encourages project efforts that achieve real people focus and functionality. Perhaps nowhere more important than in healthcare architecture, his people-first focus ensure that the needs of patients and caregivers are given top priority, enabling clients to meet their missions of achieving the best outcomes.



Senior Project Architect

Finding great fulfillment in being able to affect positive change in the lives of real people, Tracy's over 40 years of design experience make him the ideal architect able to create efficient, flexible, orderly plans for healthcare facilities that reduce waste, enhance satisfaction, and improve outcomes. A passionate advocate for our mission statement—*Making Place for the Human Spirit*—he inspires and enables our clients to provide the best care for their customers.

SPECIALTIES

Our work spans a wide range of healthcare environments, including:

MEDICAL CENTERS & MASTERPLANNING

SURGICAL & INTERVENTIONAL ENVIRONMENTS

SPECIALTY CENTERS

ACUTE UNITS

WOMEN & NEWBORN CENTERS

EMERGENCY CENTERS

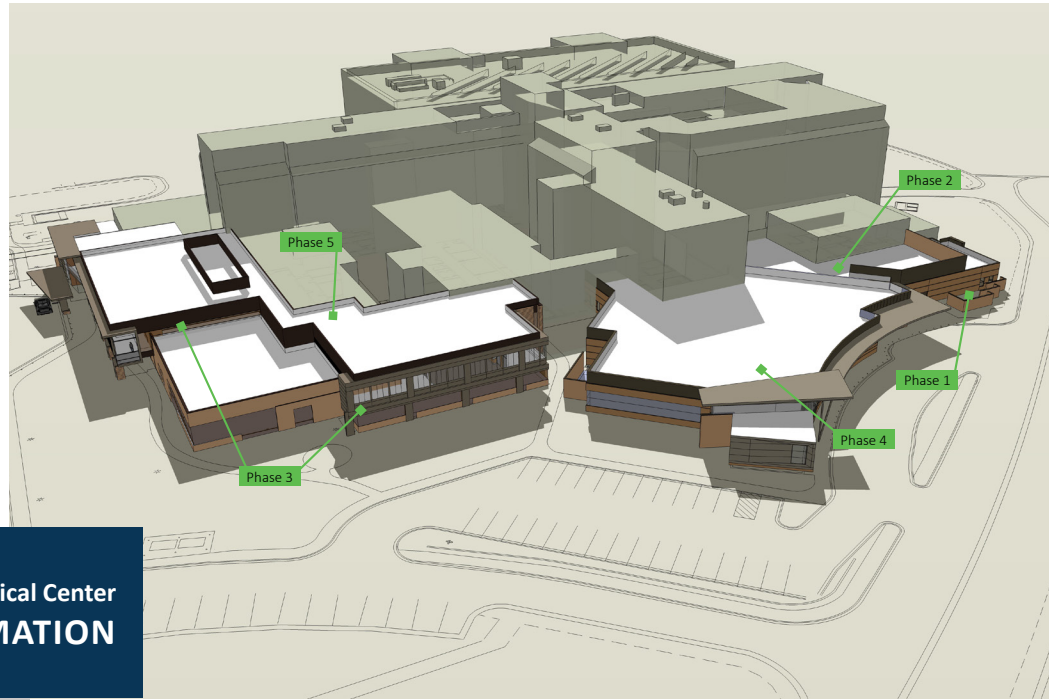


“ As I heard the plans were being made, I imagined what I would like in my ideal infusion room: comfortable chairs, easy access to the plugs, different spaces for different types of patients. I also thought since we spent so much time here it would be really nice to have it warm and welcoming with inspirational artwork on the walls and sunshine coming through the bright lit windows...as you can see it's like my dream come true.

*Gaylene | Patient
McKay-Dee Hospital Cancer Center*

MEDICAL CENTERS & MASTERPLANNING

A multi-phase expansion and renovation endeavor spanning over 12 years brings enhanced Imaging Services, a new Rehab & Prosthetics Center, and a new Emergency Center. With a vision to support the VA's mission and elevate care environments for our veterans, TSA has been engaged as a trusted advisor, planner and designer for the medical center. Working closely with campus leadership and care teams, and in concert with national VA components, the medical center and these service lines have been brought on par with the best hospitals in the broader Intermountain region.



George E. Wahlen VA Salt Lake City Medical Center NORTH CAMPUS TRANSFORMATION

Location Salt Lake City, Utah Size 55,000 sf



University of Utah Health WEST VALLEY HEALTH & COMMUNITY CENTER MASTERPLAN

Location West Valley City, Utah Size 588,000 sf



Salt Lake City's primary care clinic for the homeless, having outgrown an aged structure and desiring an enhanced, integrated care delivery model engaged TSA to guide planning and concept design efforts. Together it was determined that a new replacement building would be needed while keeping the current clinic operational. TSA provided Fourth Street Clinic a forward-looking masterplan to guide the replacement clinic, future growth, and expanded services while providing architectural and site planning imagery to aid in capital campaign fundraising. The project has now been funded and is moving forward.

Fourth Street Clinic NEW CAMPUS MASTERPLAN

Location Salt Lake City, Utah Size 48,695 sf

SURGICAL & INTERVENTIONAL ENVIRONMENTS

Intermountain Health desired a new interventional suite to support advanced procedures at their flagship medical center. TSA guided Intermountain Health in transforming two underutilized ORs into a high-performing collaborative environment for their surgical team. Through close engagement with physicians and nurses—including full-scale mock ups—the team implemented a first-on-campus hybrid environment with an open control, vision-enhancing lighting, and an engaging, flexible stage for care teams to perform their best work in the burgeoning image-guided surgical space.



Intermountain Health INTERMOUNTAIN MEDICAL CENTER HYBRID OPERATING ROOM

Location Murray, Utah Size 1,700 sf



Intermountain Health MCKAY-DEE HOSPITAL HYBRID OPERATING ROOM

Location Ogden, Utah Size 1,450 sf

As a pioneer in advanced interventional procedures, Intermountain Health engaged TSA to plan and design the first Hybrid OR in their system. A total transformation of an existing interventional radiology room, a brand new hybrid OR suite emerged to support both open and endovascular procedures in addition to procedures already performed in the interventional radiology room. This suite organizes boom-mounted lights, equipment, imaging systems, and other elements in a highly functional layout. A soothing material and finish palette provide a comfortable atmosphere for operating room staff and patients alike.



A multi-phase expansion to University Medical Center creates space for a new Interventional Radiology (IR) suite to meet growing demand for advanced procedures. This four-year effort combined thoughtful planning, innovative engineering, and strategic phasing to ensure continuous hospital operations. The result is a flexible, forward-thinking space that strengthens University Health's ability to deliver cutting-edge neurological and interventional care.

University of Utah Health
**CLINICAL NEUROSCIENCES
INTERVENTIONAL RADIOLOGY SUITE**

Location Salt Lake City, Utah Size 11,400 sf

SPECIALTY CENTERS

The Jordan Valley Cancer Center is the first comprehensive cancer care facility in the western Salt Lake Valley, bringing together medical, surgical, and radiation oncology in one location. Designed with both a dedicated entry and connection to the main hospital, it serves outpatient and inpatient needs. Inspired by hospitality and the healing elements of nature—earth, wind, water, wood, and fire—the center creates an environment of comfort, healing, and hope.



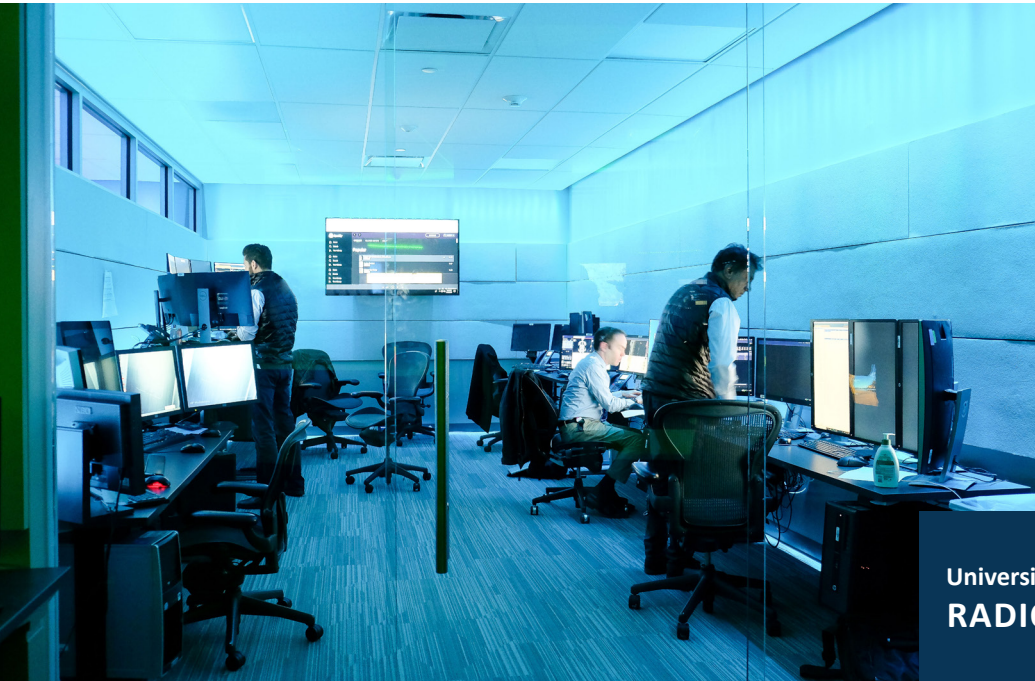
CommonSpirit Health HOLY CROSS HOSPITAL–JORDAN VALLEY CANCER CENTER

Location West Jordan, Utah Size 25,000 sf



Intermountain Health MCKAY-DEE HOSPITAL CANCER CENTER

Location Ogden, Utah Size 33,035 sf



A forward-thinking model for a teaching hospital, integrating state-of-the-art reading stations arranged in five specialty dedicated reading rooms. These surround a central core to allow for a balance of team focus, cross-team collaboration, and physician consultation.

University of Utah Health RADIOLOGY READING CENTER

Location Salt Lake City, Utah Size 22,000 sf

An innovative care and business model that offers comprehensive fertility services at half the typical cost to underserved communities. The clinic redefines the patient experience with a day spa-like space that is both welcoming and supportive for patients and their families. It also gives the care team dedicated collaborative space on the clinic's "offstage" side with separate access to patient rooms. A unique feature of the design is the opportunity for patients to see into the embryology lab—creating a more intimate and transparent experience that is not typically seen in the market. This approach fosters connection, trust, and a sense of involvement in one of life's most meaningful moments.



Wellnest FERTILITY CLINIC

Location Ogden, Utah Size 6,825 sf

ACUTE UNITS

A multi-phase renovation of active cardiology spaces over several years, allowing continuous operations throughout construction. The project modernized and expanded electrophysiology labs, cath labs, prep and recovery areas, and cardiovascular units—improving workflow, efficiency, and patient care. Upgrades include advanced imaging environments and state-of-the-art private patient rooms designed to enhance both clinical performance and the patient experience.



University of Utah Health CARDIOVASCULAR UNIT

Location Salt Lake City, Utah Size 26,895 sf



University of Utah Health ACUTE INTERNAL MEDICINE UNIT

Location Salt Lake City, Utah Size 13,653 sf

This project included the conversion of existing office space to new patient rooms. Implementing UHealth's innovative new "patient room of the future" model (designed by TSA) made the most of space challenges presented in the remodel of the older patient tower. This first implementation of the revolutionary new layout enhances patient recovery by empowering and enabling a return to full health. Patients are given control of lighting, education, dining service, and entertainment while enjoying the greater dignity and autonomy provided by a direct path with continuous handrail from the bed to sink, toilet, and shower areas.

WOMEN & NEWBORN CENTERS

TSA re-imagined the Women and Newborn Center at Holy Cross Hospital—Jordan Valley to create a tranquil, hospitality-inspired environment for patients and families. Patient rooms were expanded and reconfigured to improve comfort, flow, and caregiver efficiency, with updated lighting and calming materials enhancing the overall experience. A second phase introduced redesigned labor and delivery rooms and a welcoming two-level lobby, bringing together natural light, art, and water features to support a sense of calm and care.



CommonSpirit Health HOLY CROSS HOSPITAL—JORDAN VALLEY WOMEN & NEWBORN CENTER

Location West Jordan, Utah Size 18,000 sf



While modernizing the center into a place mothers and families would be comfortable in, we also kept the healthcare professional's needs in mind. The result is a tranquil, clean, open plan with patient rooms that support specific zones for caregivers, patients, and visitors. By relocating access to en-suite storage closets in the labor and delivery rooms, we not only optimized the new zoning, but also increased staff effectiveness and improved workflow. The specially-designed headwall—now replicated in all postpartum and labor & delivery rooms—allowed for relocation of medical gases and nurse care implements to the preferred side of the bed, freeing up a more commodious area for families and partners-in-care inside the room.

CommonSpirit Health HOLY CROSS HOSPITAL—DAVIS WOMEN & NEWBORN CENTER

Location Layton, Utah Size 28,413 sf

EMERGENCY CENTERS

TSA Architects transformed an undersized emergency department at Uintah Basin Medical Center into a state-of-the-art facility serving eastern Utah. Developed in close collaboration with clinical staff, the design improves wayfinding, efficiency, and patient-centered care through an open, flexible layout. Thoughtfully designed exam rooms support both providers and families, while a regional material palette creates a cohesive, calming environment inspired by the surrounding landscape.



Uintah Basin Healthcare UINTAH BASIN MEDICAL CENTER EMERGENCY DEPARTMENT

Location Roosevelt, Utah Size 12,000 sf



MountainStar Healthcare MOUNTAIN VIEW HOSPITAL EMERGENCY DEPARTMENT

Location Payson, Utah Size 10,000 sf

TSA Architects designed a state-of-the-art emergency department for HCA MountainStar, doubling the size of services through a full renovation and expansion. Organized around a central nurse station, the layout improves visibility, access, and staff efficiency. Thoughtful features—including streamlined exam rooms, a dedicated Fast Track zone, and enhanced family and staff spaces—support both high-performance care and a more compassionate patient experience.



A new Emergency Department challenges the status quo of government architecture resulting in a dramatically better environment for the VA patient, family, caregivers, institution, and broader community. Increased daylight, intuitive wayfinding, and a highly functional, flexible layout are transforming the VA Medical Center in Salt Lake City. These improvements support a wide range of patient and family needs while allowing staff to spend more time on care. To create a more accessible, state-of-the-art emergency department with stronger connections to Radiology, the project required demolition of the existing Administration Wing—ultimately doubling the capacity of the former emergency services.

George E. Wahlen VA Salt Lake City Medical Center
NEW EMERGENCY CENTER

Location Salt Lake City, Utah **Size** 20,400 sf